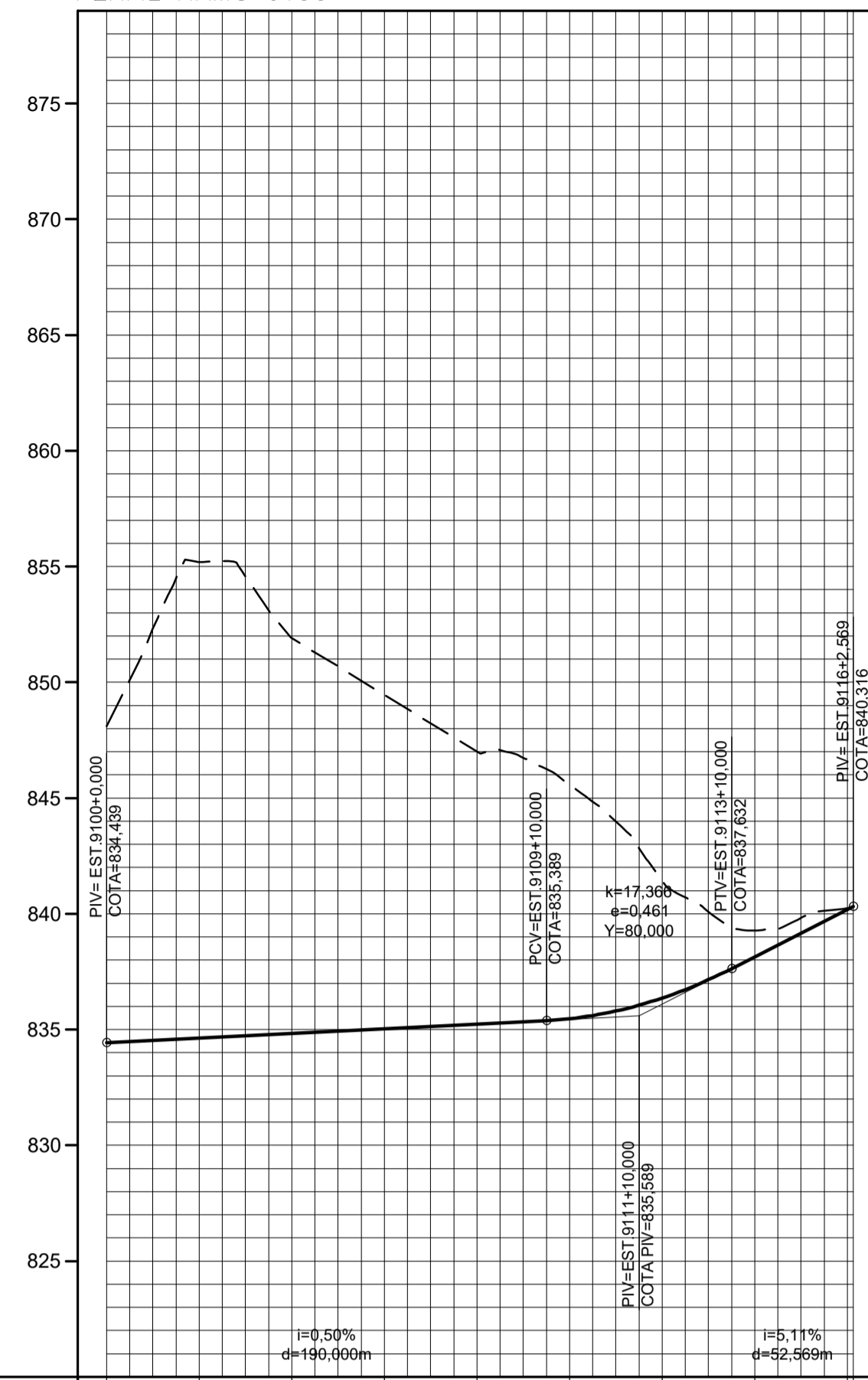
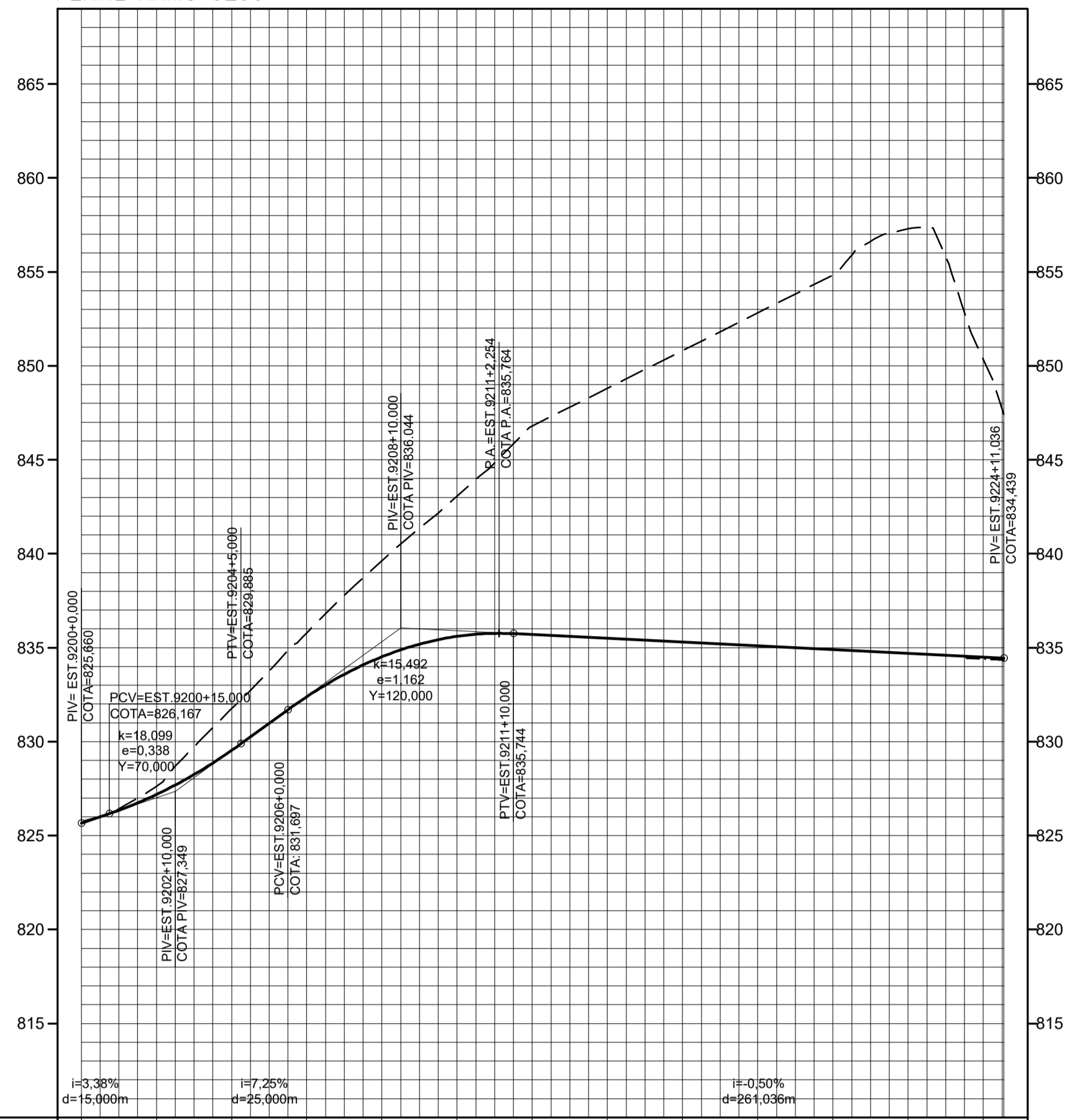


PERFIL RAMO 9100



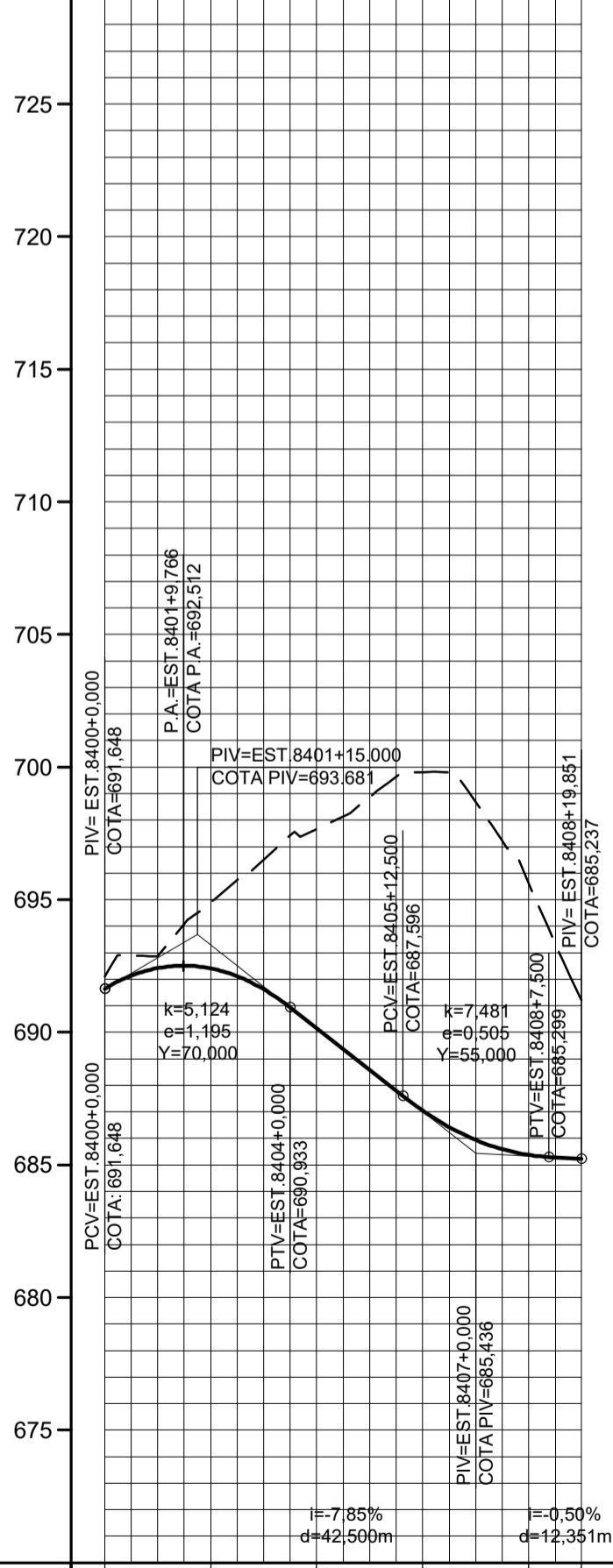
ESTACQUEAMENTO	9100	9110	
COTAS TERRENO/PROJETO	848.10 834.439 855.18 834.039 834.839 835.039 835.239 845.88 845.488 84.44 835.359 839.28 838.142 840.25 840.105 840.105 840.1316	835.11% d=52.399m	840.1316

PERFIL RAMO 9200



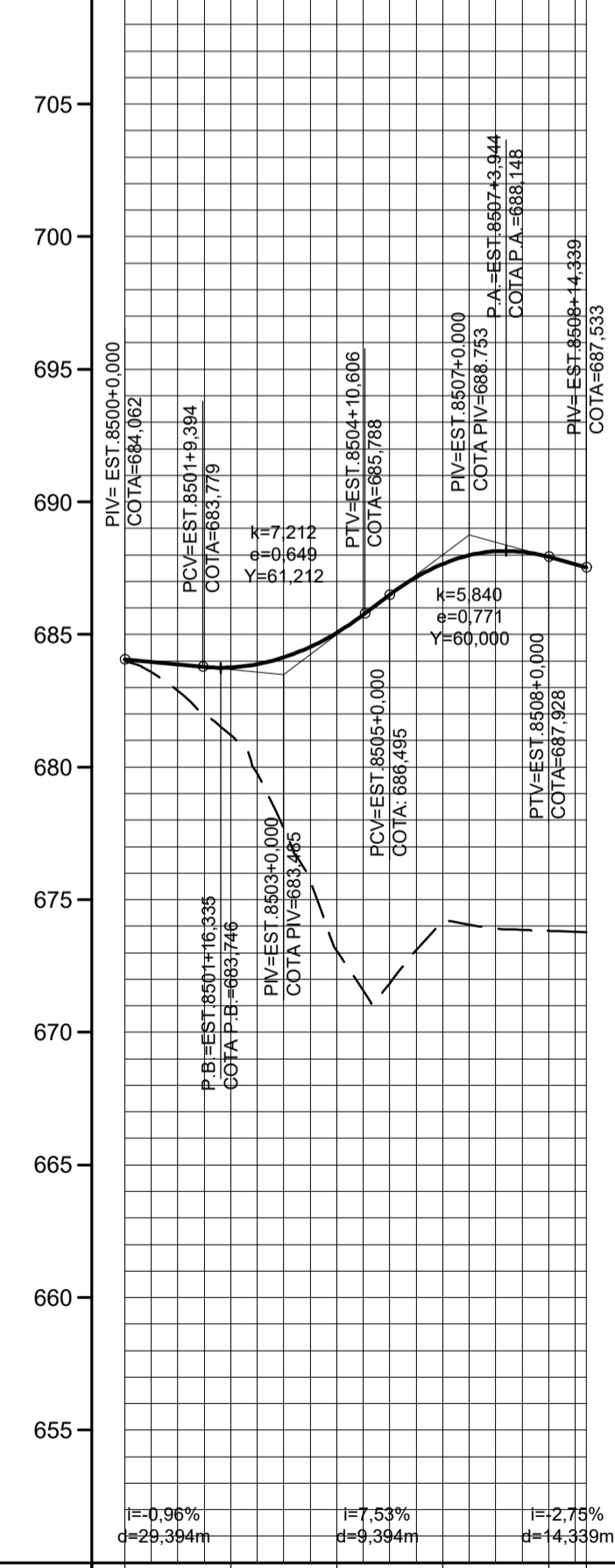
ESTACQUEAMENTO	9200	9210	9220
COTAS TERRENO/PROJETO	825.660 827.62 827.184 831.75 829.530 835.79 832.389 839.03 834.513 843.06 835.004 846.61 835.694 835.484 835.294 835.094 834.694 834.29 834.694 860.33 834.484	7.25% d=25.900m	834.484

PERFIL RAMO 8400



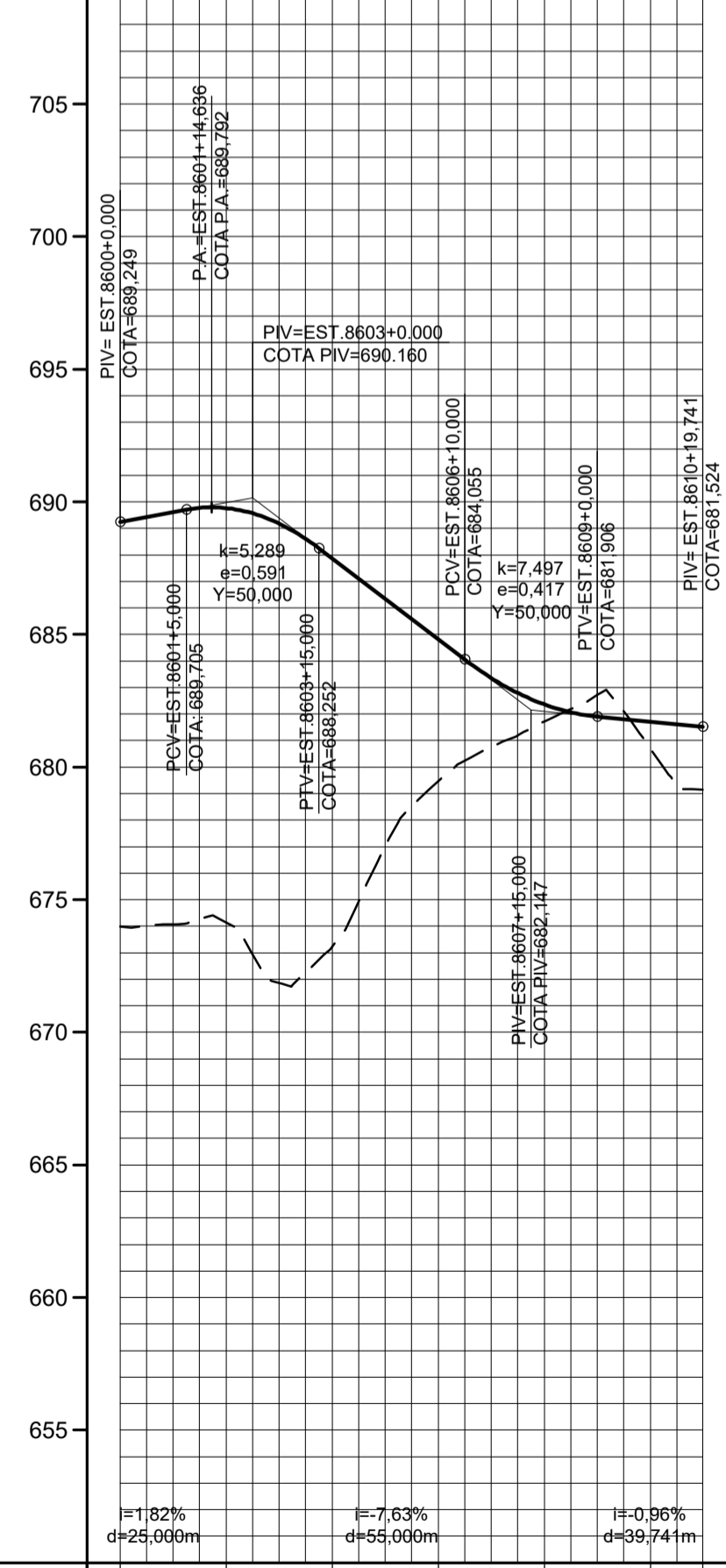
ESTACQUEAMENTO	8400
COTAS TERRENO/PROJETO	692.11 691.048 694.90 692.410 697.66 690.148 699.81 697.044 695.61 695.374 691.22 695.231

PERFIL RAMO 8500



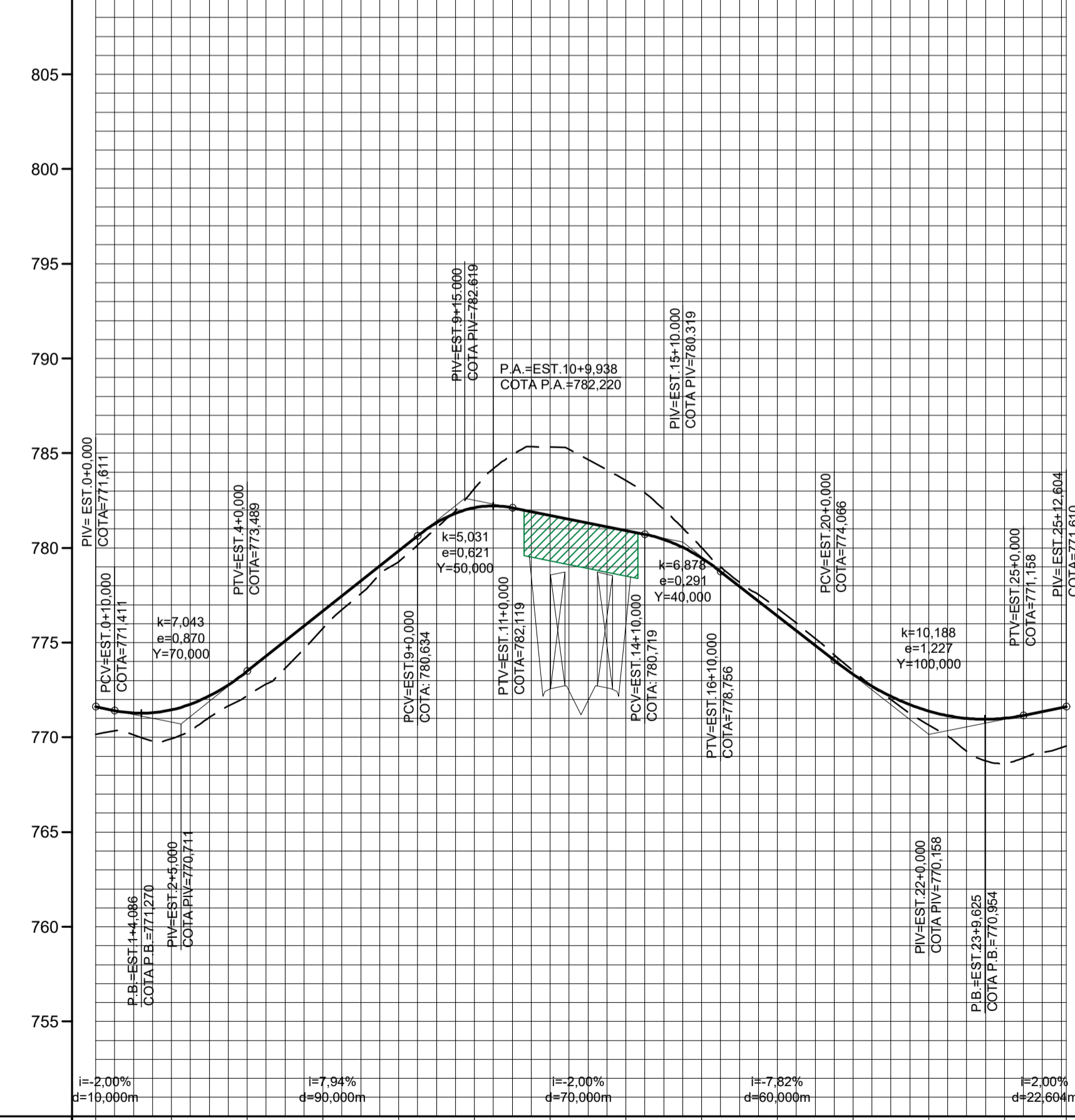
ESTACQUEAMENTO	8500
COTAS TERRENO/PROJETO	680.67 684.062 677.98 683.755 674.54 695.088 675.10 687.658 690.47 682.929 687.533

PERFIL RAMO 8600



ESTACQUEAMENTO	8600
COTAS TERRENO/PROJETO	673.98 689.249 674.14 689.765 672.23 687.871 675.47 684.918 681.73 682.365 685.70 679.14 679.15 681.524

PERFIL RETORNO 4 (KM 59.4)



ESTACQUEAMENTO	0	10	20	25	
COTAS TERRENO/PROJETO	770.15 771.611 765.03 771.450 772.20 773.489 775.74 776.663 779.28 779.840 785.13 782.121 785.32 781.719 785.56 780.919 780.02 779.465 776.80 776.411 773.52 773.334 770.65 771.385 768.63 771.007 769.54 771.610	2.00% d=10.000m	7.94% d=90.000m	2.00% d=70.000m	7.82% d=60.000m

LEGENDA:
 OAE PROPOSTA
 GREIDE PROPOSTO
 TERRENO EXISTENTE

NOTAS:
 1. COTAS E DIMENSÕES EM METRO.

	REG. N.º LOC.	accenture consulting RODOANEL RMBH/MG	TRECHO: SUBTRECHO: SEGMENTO:	Alça Norte - Rodoanel Região Metropolitana de Belo Horizonte Entr. LMG-806 (Ribeirão das Neves) - Entr. BR-381 (Sabará)	ESCALA: H=1:5.000 V=1:500
	VISTO	DATA 08/2020	LOTE	PROJETO GEOMÉTRICO CONCEITUAL PERFS LONGITUDINAIS	REG. N.º LOC. FOLHA: RN-GM/44